



HAEFELI • LYSNAR

SURVEY EQUIPMENT



28 HASLER ROAD, OSBORNE PARK W.A. 6017

TELEPHONE (08) 9445 8811

FACSIMILE (08) 9445 8822

HLSOLUTIONS.com.au

info@HLSOLUTIONS.com.au



February 2009 Newsletter

Hello and welcome to the February 2009 Haefeli-Lysnar Newsletter.

We would like to take this opportunity to wish you all a very safe and happy 2009 !!

With all of the discussion in the media about the economic crises, government intervention and financial forecasts; it can be a challenge to remain optimistic about the future. At times such as these, it is important to keep an eye on the big picture.

While there is certainly a good deal of introspection going on out there, the wheels of industry have definitely not stopped: There are still new projects being approved and new opportunities to pursue. The opportunities may not look the same as they did a year ago, but they are out there.

In these times your business (and ours) needs to be creative and efficient to stay competitive. Now more than ever, a focus on workflows and overall process efficiency will enable surveyors to bid jobs more competitively and finish jobs faster. Thankfully, Trimble surveying solutions deliver what many smart businesses are looking for to adapt to the new economy.

Working together with you, our Business Partners, we are confident we can help to position your company to become even stronger and move forward into the future.

In this Edition:

*****NEW: Trimble Access Software***

*****Perth VRS Update Seminar***

*****Tax Cuts for Business Investment / Purchasers***

*****Smart Business - Hire - Buy / Rental Options***

*****TGO and Vista***

*****Technical Tip: Reflectorless Measurements***

*****Team Trimble: Receive Great Benefits by Joining***



HAEFELI-LYSNAR

SURVEY EQUIPMENT



28 HASLER ROAD, OSBORNE PARK W.A. 6017

TELEPHONE (08) 9445 8811

FACSIMILE (08) 9445 8822

HLSOLUTIONS.com.au

info@HLSOLUTIONS.com.au



NEW RELEASE: Trimble Access Software

New Innovative Trimble Field Software

Trimble Access software offers survey teams a new approach to surveying that expedites data collection, processing, analysis, and delivery through improved workflows, collaboration and control, enabled by constant connectivity* across the project team.

With Trimble Access, surveying businesses can access their true potential.

Send Data Back and Forth, Not People

Trimble Access brings the field and office teams closer together by enabling data sharing and collaboration in a secure environment connected through the Internet. Surveys can be completed faster with less time spent traveling back and forth to the office.

Missing a job file?

Change of plans?

Client needs data right away?

Trimble Access software keeps your teams synchronized and connected, so you can handle whatever the day has in store for you.

Service subscribers simply click AccessSync to immediately and securely synchronize field and office files between the field data collector and the Trimble Connected Community portal for the office teams. Trimble AccessSync can also be set to continuously post and receive job files for always-on connections with the office. With AccessSync, the office staff can perform initial quality assurance checks before the team leaves the site and start work on creating client deliverables sooner.

See more information and The Movie at:

<http://www.trimble.com/trimble-access.shtml>



**CONNECT TO A WORLD
OF NEW POSSIBILITIES.**

Trimble® Access™ Software





28 HASLER ROAD, OSBORNE PARK W.A. 6017
TELEPHONE (08) 9445 8811
FACSIMILE (08) 9445 8822
HLSOLUTIONS.com.au
info@HLSOLUTIONS.com.au

Perth VRS - Updated Network
VRS Seminar at Burswood Golf Resort
Thursday 19th February

**Instant, accurate spatial positioning
without the need for a base station !!**
Recently Expanded & Upgraded Network

As you can see from this map - The Perth VRS Network has expanded substantially over the last 12 months.

It now covers much of the Southwest WA region as well as further enhanced coverage around the Perth region.

Haefeli-Lysnar in conjunction with **GPS Network Perth** and **Digital Mapping Solutions** is proud to present the **Perth VRS Network Seminar**. The Perth VRS system enables spatial professionals to obtain accurate position data without the need for a base station setup.

This half day seminar will be very informative and interesting, detailing how the system works, how it can benefit your business, and with practical Hands On demonstrations.

This is an excellent opportunity to see how the future of Spatial Positioning Technology can be used to increase your productivity and profitability. Includes lunch and a chance to win great door prizes. Numbers are limited so please register early!! We look forward to seeing you there !! Instant, accurate spatial positioning without the need for a base station !!





HAEFELI LYSNAR

SURVEY EQUIPMENT



- 📍 28 HASLER ROAD, OSBORNE PARK W.A. 6017
- ☎ TELEPHONE (08) 9445 8811
- 📠 FACSIMILE (08) 9445 8822
- 🌐 HLSOLUTIONS.com.au
- ✉ info@HLSOLUTIONS.com.au



Investment Incentive Allowance to Boost Business

Media Statement - 12th December 2008 - Wayne Swan

Today I am pleased to announce further action by the Rudd Government to boost economic activity and support jobs with a 10 per cent temporary investment allowance - in the form of an additional tax deduction - which will encourage important capital investment by Australian businesses.

Today's announcement will give businesses confidence to continue to plan positively and invest for the future, providing crucial support to growth and jobs during these difficult economic times.

Wayne Swan



The allowance will be in the form of an additional tax deduction equal to 10 per cent of the cost of an eligible asset. The allowance will be applicable to most new tangible depreciating assets - which includes most items of plant and equipment - over \$10,000 which are acquired or ordered by the end of the current financial year.

This means a business can receive an additional 10 per cent tax deduction - available immediately - for investment brought forward and in place by 30 June 2010. In practical terms, this is an added incentive for businesses to proceed with their investment plans in this difficult environment.

For more information please visit:

<http://www.alp.org.au/media/1208/mstres120.php>

Smart Business: Clever financing options can ease the pain of having to outlay equipment value all in one hit.

We have recently put in place an exciting and flexible rental / lease programme which can be custom designed to your financing requirements. These economical options offer an excellent way to save on capital outlay when purchasing new equipment.

Please contact us to discuss your individual requirements.



28 HASLER ROAD, OSBORNE PARK W.A. 6017
TELEPHONE (08) 9445 8811
FACSIMILE (08) 9445 8822
HLSOLUTIONS.com.au
info@HLSOLUTIONS.com.au

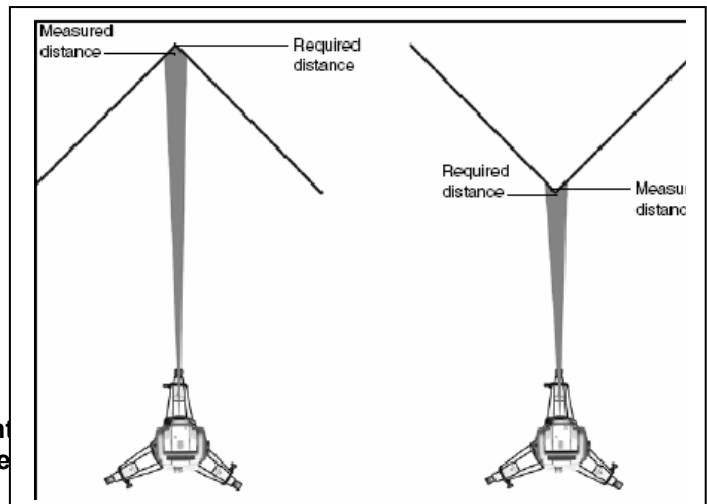


Technical Tip – Some Tips Measuring in DR Mode

The **S6 DR300+** uses the Time of Flight (TOF) method to measure points using direct reflex technology as opposed to the Phase Shift method used in the **S6 1" DR Standard** model.

The TOF or Pulsed Laser method generates many short infrared or laser light pulses (approx 20 000/sec) which are transmitted through the telescope and reflect off a target. Electronics determine the round trip time for each light pulse and therefore a distance can be calculated.

The Phase Shift method uses modulated light between the transmitted light and the reflector.



The TOF (DR300+) method has a greater distance measuring range than that of the Phase shift method but the beam divergence or footprint is larger. Because of the larger footprint, part of the infrared laser pulses are returning a distance from objects surrounding the point being measured and therefore diluting the accuracy of the measurement.

NB: Before attempting any DR measurements choose the S6 which best suits the application based on the two DR measurement methods outlined above. Even though the Phase Shift method has a smaller footprint, errors are still possible and correct measuring techniques should be used for both methods.



HAEFELI-LYSNAR

SURVEY EQUIPMENT



28 HASLER ROAD, OSBORNE PARK W.A. 6017

TELEPHONE (08) 9445 8811

FACSIMILE (08) 9445 8822

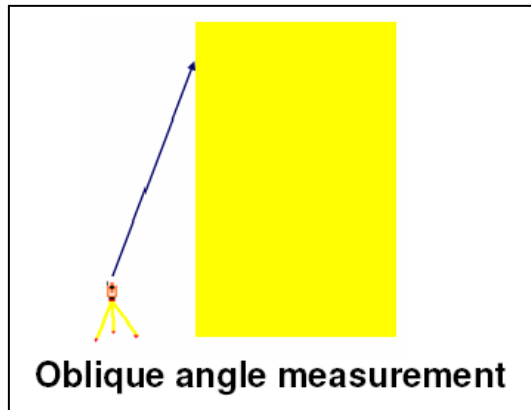
HLSOLUTIONS.com.au

info@HLSOLUTIONS.com.au



1. Oblique Angles:

When measuring to objects at very oblique angles use both **Face 1 and Face 2** measurements. This will cancel out the effect of the slope caused by the oblique angle.



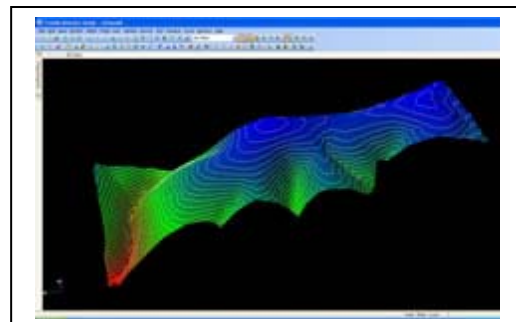
2. Use Angle Offsets:

Use angle offsets when measuring to small objects by taking a distance measurement to the middle of the object and then turn the angle to the required position on the edge of the object. Select from the Survey Controller main menu *Survey/Measure Topo* and in the *Method* field select either *Angle Offset*, *H. Angle Offset* or *V. Angle Offset*.

Vista – Beware !!

Trimble Geomatics Office Users please be aware that TGO is not Microsoft Vista compatible. Trimble's new comprehensive Office Processing Software – **Trimble Business Centre is Vista compatible.**

For more information on Trimble Business Centre, please contact Brad Gray at our office: 9445 8811 / brad@hlsolutions.com.au





HAEFELI • LYSNAR

SURVEY EQUIPMENT



28 HASLER ROAD, OSBORNE PARK W.A. 6017

TELEPHONE (08) 9445 8811

FACSIMILE (08) 9445 8822

HLSOLUTIONS.com.au

info@HLSOLUTIONS.com.au

Get in the Game!

This is your personal invitation to be part of an elite team, the Trimble Survey Team.

As a Trimble Survey Team Loyalty Program member, you will:

- Enjoy exclusive access to the Trimble Survey Team website
 - Amazing stories from the field
 - Network with your industry peers
- "Ask the Coach" - Trimble Survey experts ready to answer your questions
 - Receive unique Trimble Survey Team gear
 - And much more!



Join the team today by contacting your local Trimble Distributor or email us at trimble_surveyteam@trimble.com for instructions on how to join.